

LE VENT

Condominiums

at Eagle Beach

ARUBA



*The door
to your permanent
vacation*

A splendid residential complex built to the highest level; with quality finishes, bright spaces and all the details one could want in their home. Located in a magnificent area of Aruba, where you can enjoy the sun all day and share with friends and family.



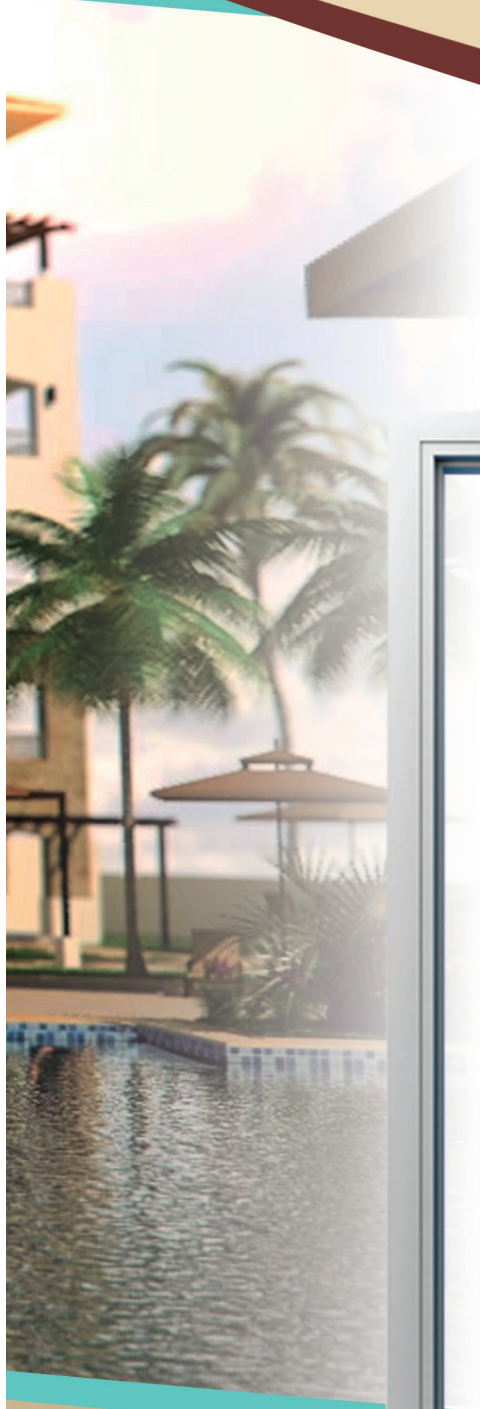
WWW.LEVENTARUBA.COM

LEVENT

Condominiums

at Eagle Beach

ARUBA



*The door to your
permanent
vacation*



WWW.LEVENTARUBA.COM



LEVENT

Condominiums

at Eagle Beach

ARUBA

ARUBA
Paradise
Caribbean

Aruba's beaches are its main attraction, where sea, sky and white sands join to form a magnificent spectacle. The Eagle Beach only a few steps from the residential complex is considered one of the most beautiful beaches in the world.



WWW.LEVENTARUBA.COM



LEVENT

Condominiums

at Eagle Beach

ARUBA

Eagle Beach

*one of the most beautiful
beaches in the world
at your door step*



A residential complex designed for families who like
to live a permanent vacation

WWW.LEVENTARUBA.COM

LE VENT

Condominiums

at Eagle Beach

ARUBA



LE VENT will consist of green areas, a walkways, a hut, a swimming pool and a solárium, all this embedded in a general landscape



WWW.LEVENTARUBA.COM

LE VENT

Condominiums

at Eagle Beach

ARUBA



Walkways, areas for sunbathing and relaxing, green areas, swimming pool and a gym, all you need to enjoy with friends and family.



WWW.LEVENTARUBA.COM

LE VENT

Condominiums

at Eagle Beach

ARUBA





WWW.LEVENTARUBA.COM

LEVENT

Condominiums

at Eagle Beach

ARUBA



Town Houses

220 m²

Quantity: 05 units



GROUND FLOOR:

- Entrance and foyer
- Kitchen with spacious pantry
- Laundry room
- Living/Dining room
- Guest bathroom
- Study/Family/Guest Room
- Patio at rear to courtyard
- Staircase to second level
- Storage closet

SECOND LEVEL:

- Master bedroom and bath with terrace and walk-closet
- Two guest bedrooms, each with closets and shared bathroom



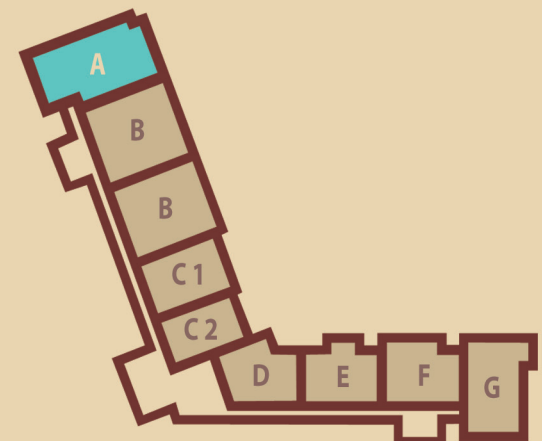
Apto. Type "A"

190 m²

Quantity: 02 units



- Kitchen with pantry•
- Laundry room•
- Living/Dining room•
- Guest bathroom•
- Master bedroom with•
walk-in closet
- Master bath with•
dual sinks
- Two guest bedrooms•
each with closet and bath
- Terrace•

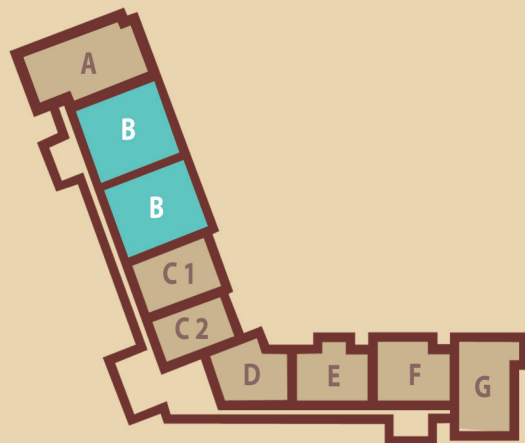


Apto. Type "B"

178 m²

Quantity: 08 units

- Kitchen with pantry
- Laundry room
- Living/Dining room
- Guest bathroom
- Master bedroom and bath with dual sinks and two walk-in closets
- Two guest bedrooms, each with closet and bath
- Terrace



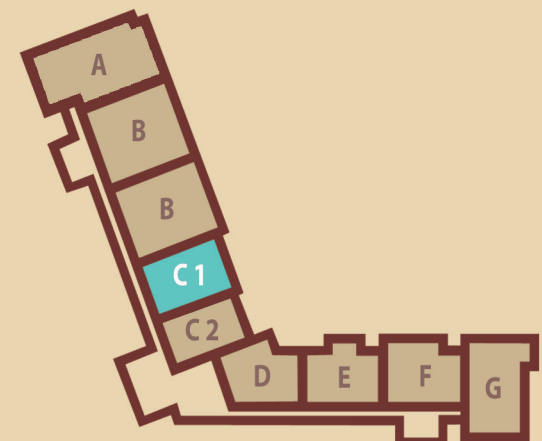
Apto. Type "C1"

108 m²

Quantity: 05 units



- Kitchen and pantry•
- Laundry room•
- Living/Dining room•
- Master Bedroom and bath•
with walk-in closet
- One guest bedroom with•
bath and closet
- Terrace•

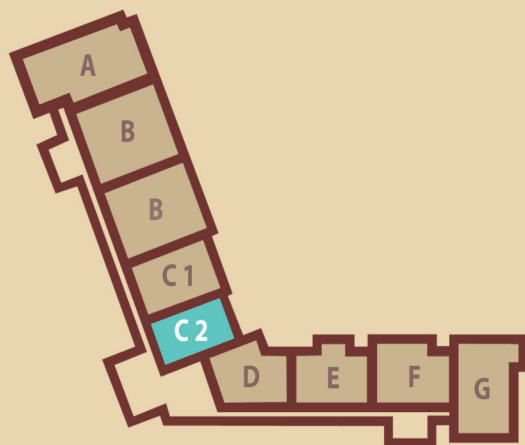


Apto. Type "C2"

105 m²

Quantity: 06 units

- Kitchen and pantry
- Laundry room
- Living/Dining room
- Master Bedroom and bath with walk-in closet
- One guest bedroom with bath and closet
- Terrace



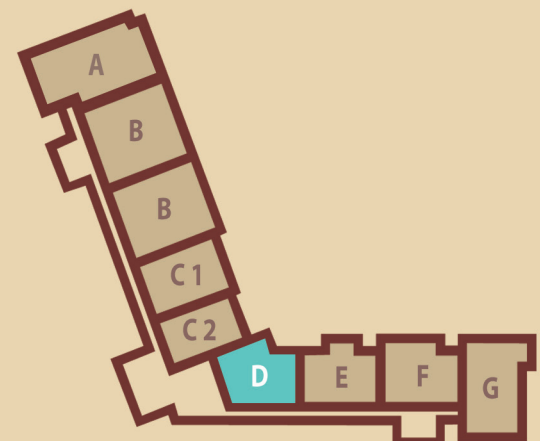
Apto. Type "D"

112 m²

Quantity: 05 units



- Kitchen and pantry•
- Laundry room•
- Living/Dining room•
- Guest bathroom•
- Master bedroom and bath•
with walk-in closet
- Guest bedroom and bath•
with closet•
- Terrace•

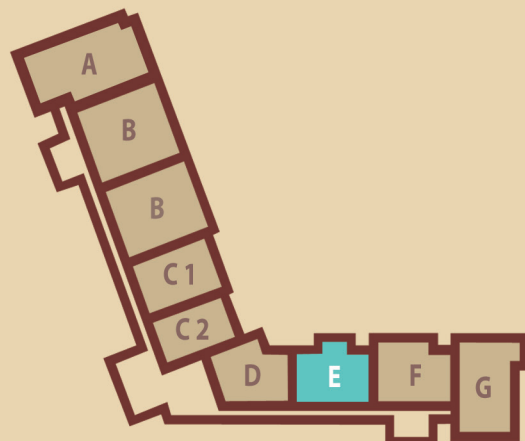


Apto. Type "E"

115 m²

Quantity: 05 units

- Kitchen and pantry
- Laundry room
- Living/Dining room
- Guest bathroom
- Master bedroom and bath with walk-in closet
- Guest bedroom and bath with closet
- Terrace



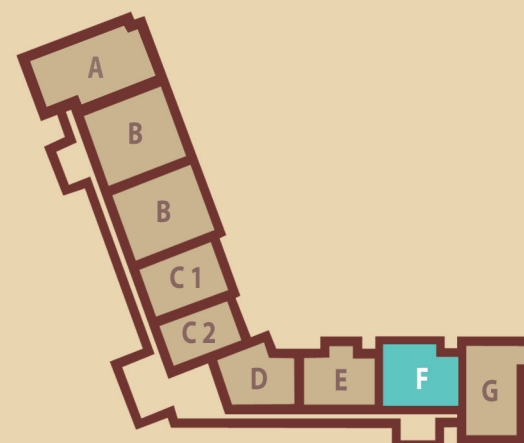
Apto. Type " F "

122 m²

Quantity: 05 units



- Kitchen and pantry•
- Laundry room•
- Living/Dining room•
- Guest bathroom•
- Master Bedroom and bath•
- with walk-in closet•
- Guest bedroom and bath•
- with closet
- Terrace•



Apto. Type "G"

136 m²

Quantity: 05 unit

- Kitchen and pantry
- Laundry room
- Living/Dining room
- Guest bathroom
- Master Bedroom and bath with walk-in closet
- Guest bedroom and bath with closet
- Terrace

